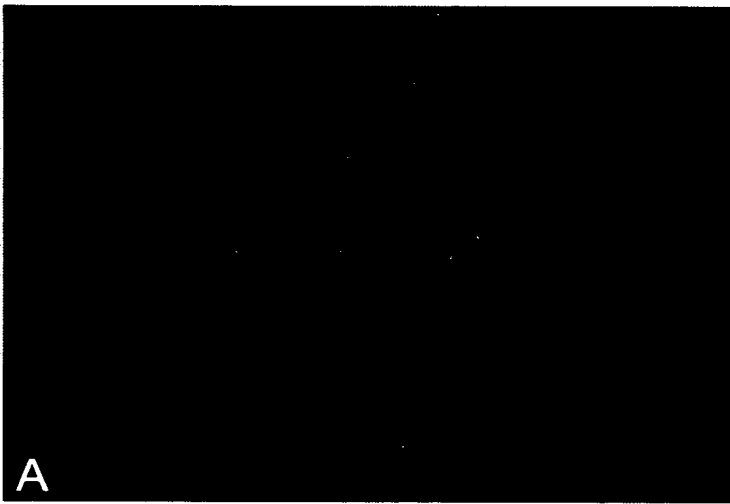


Anti-CD11b



Anti- $\alpha 1\beta 1$ integrin

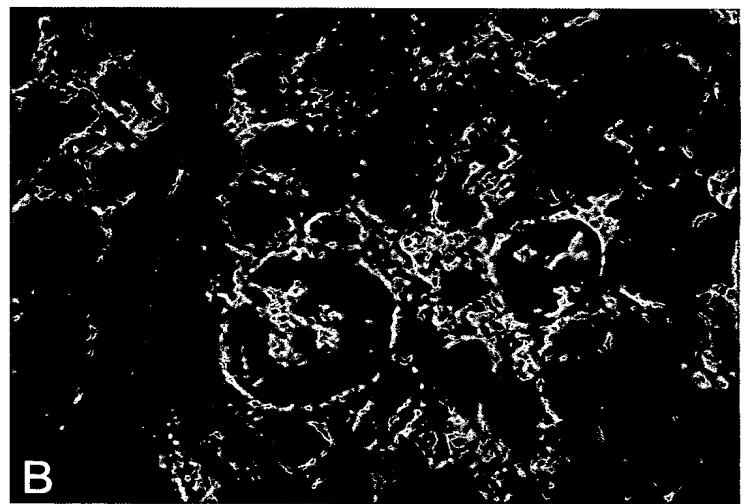


Figure 1

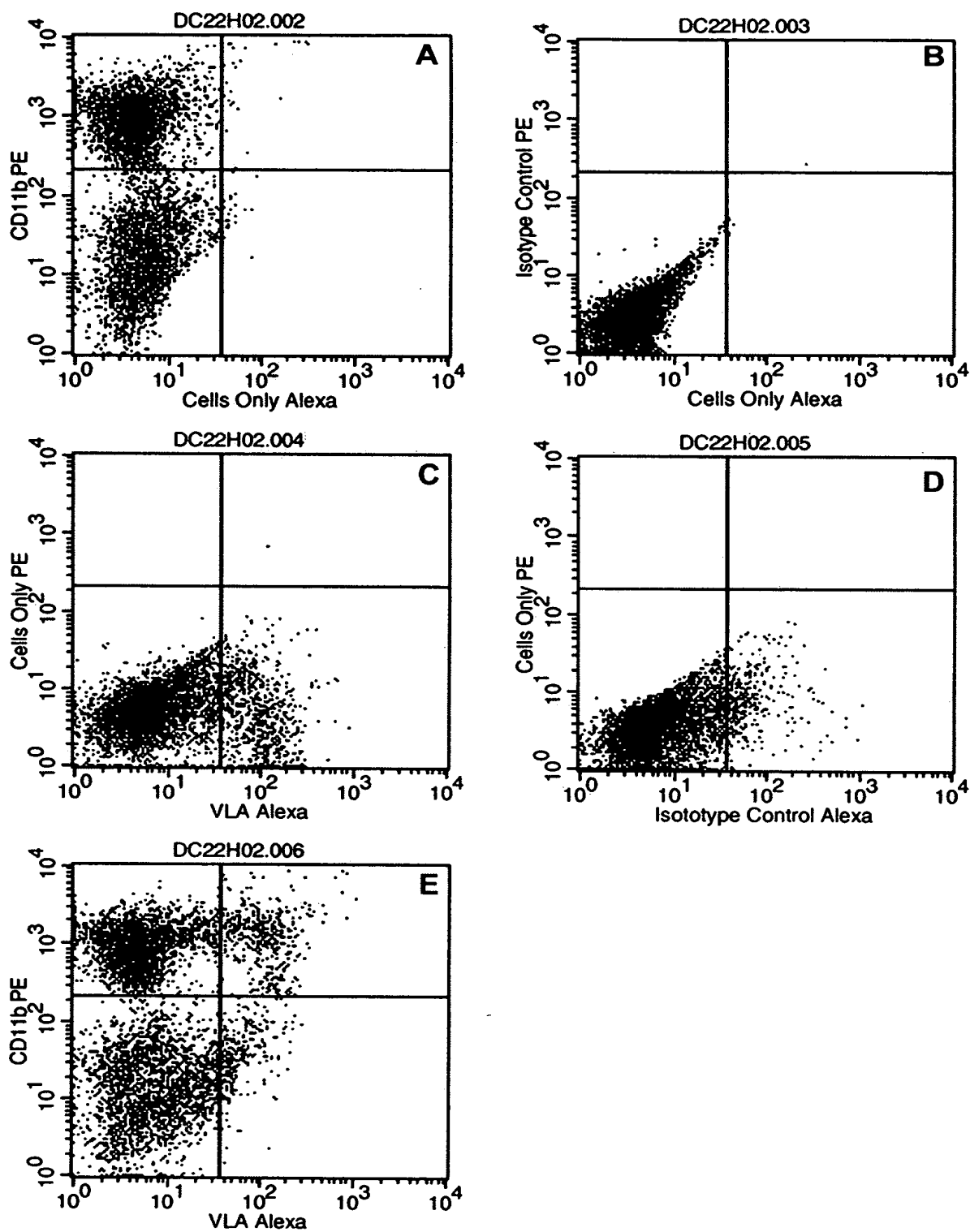


Figure 2

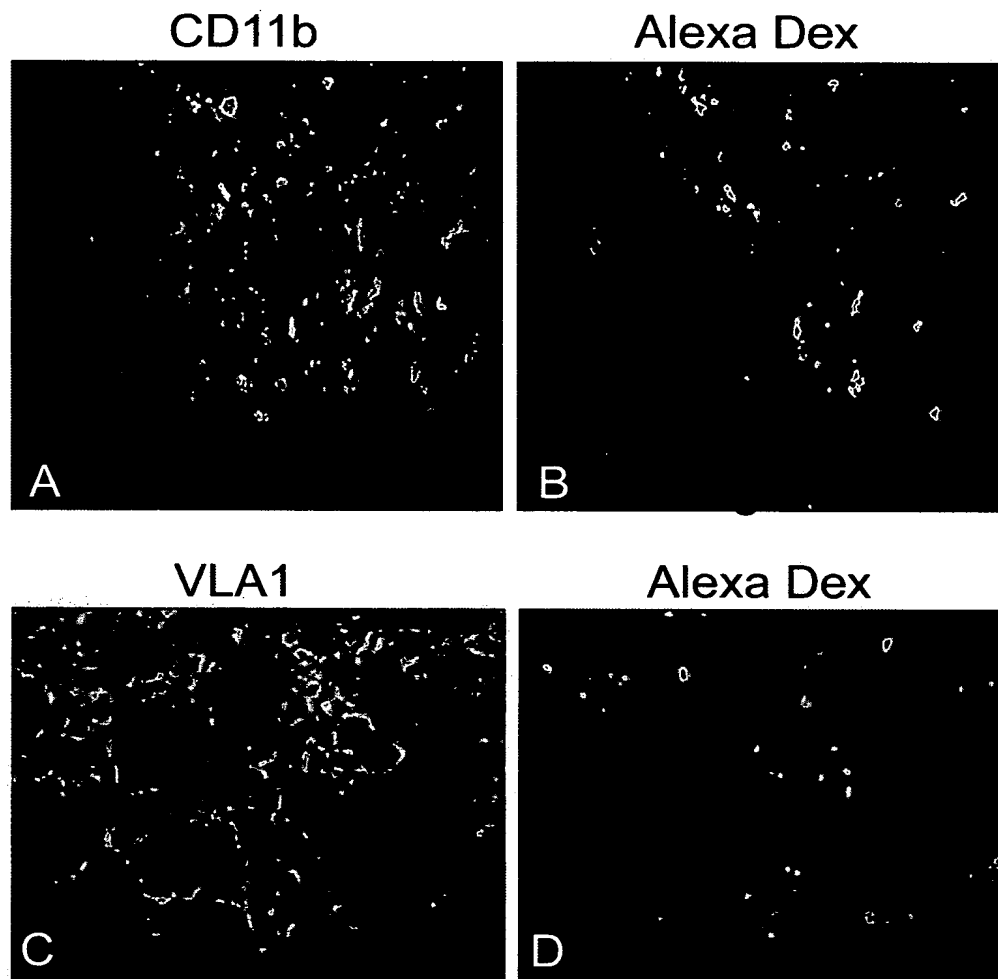


Figure 3

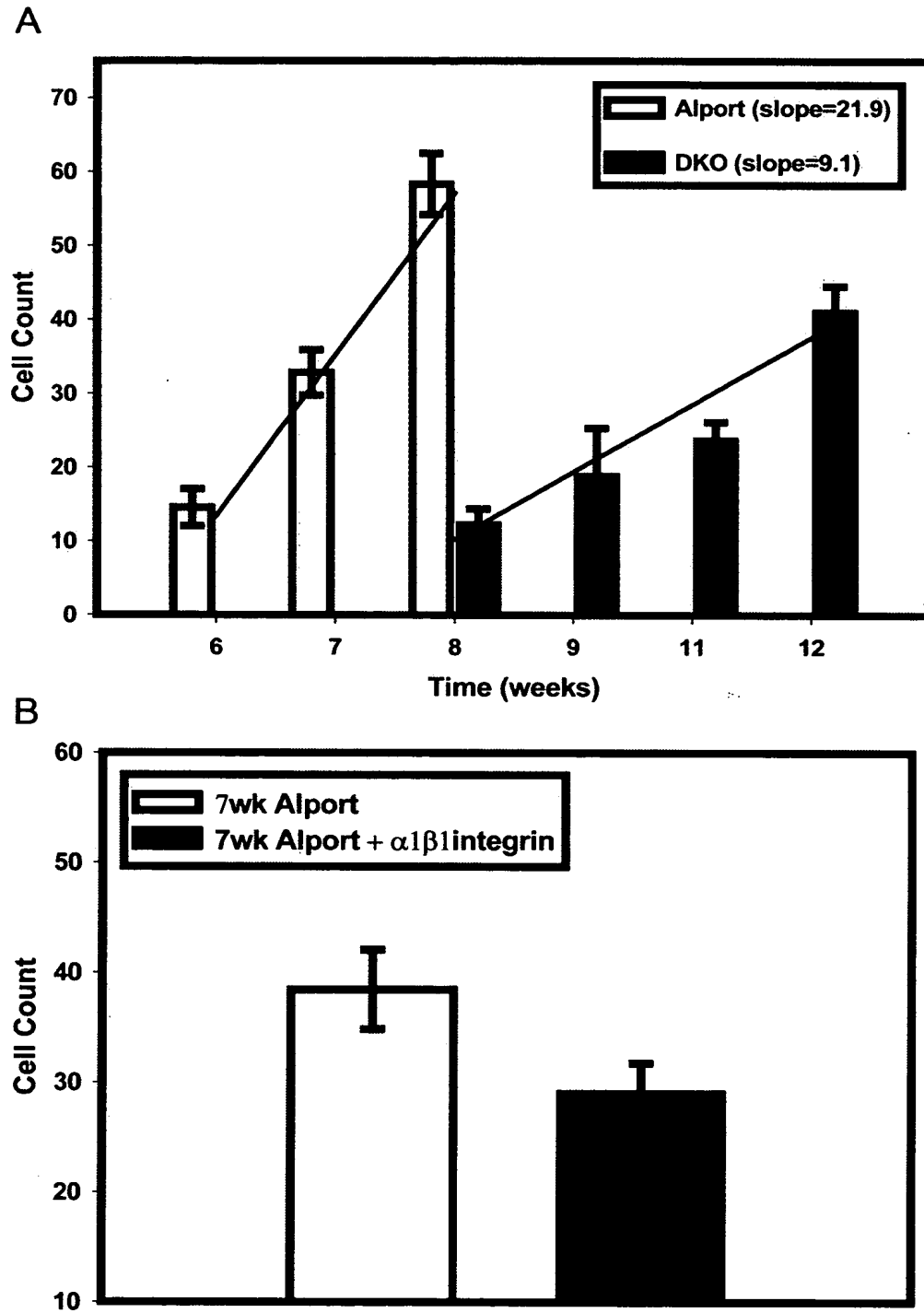


Figure 4

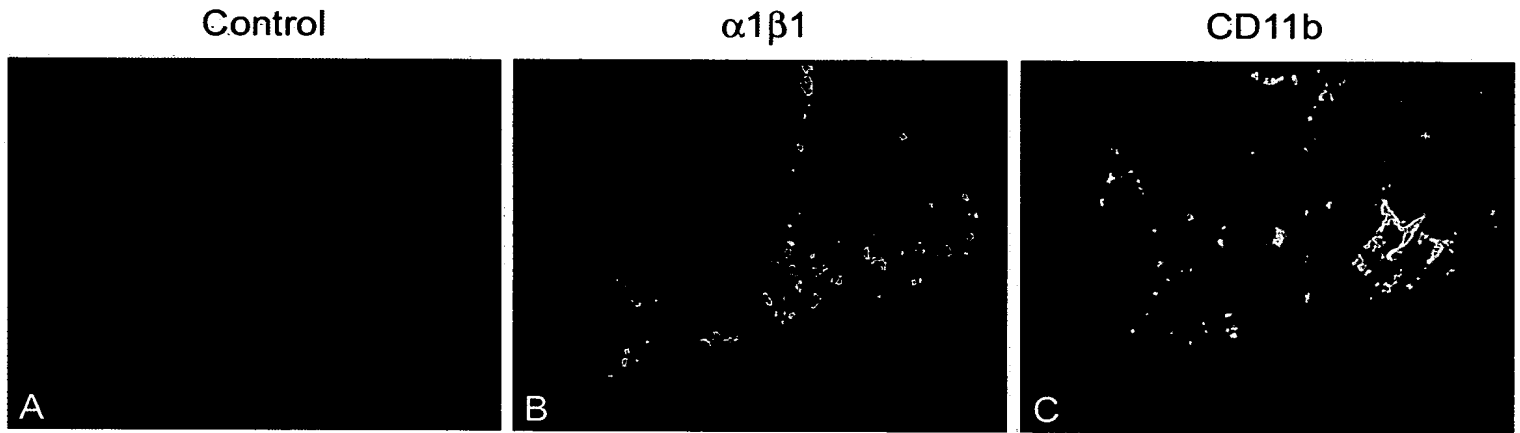


Figure 5

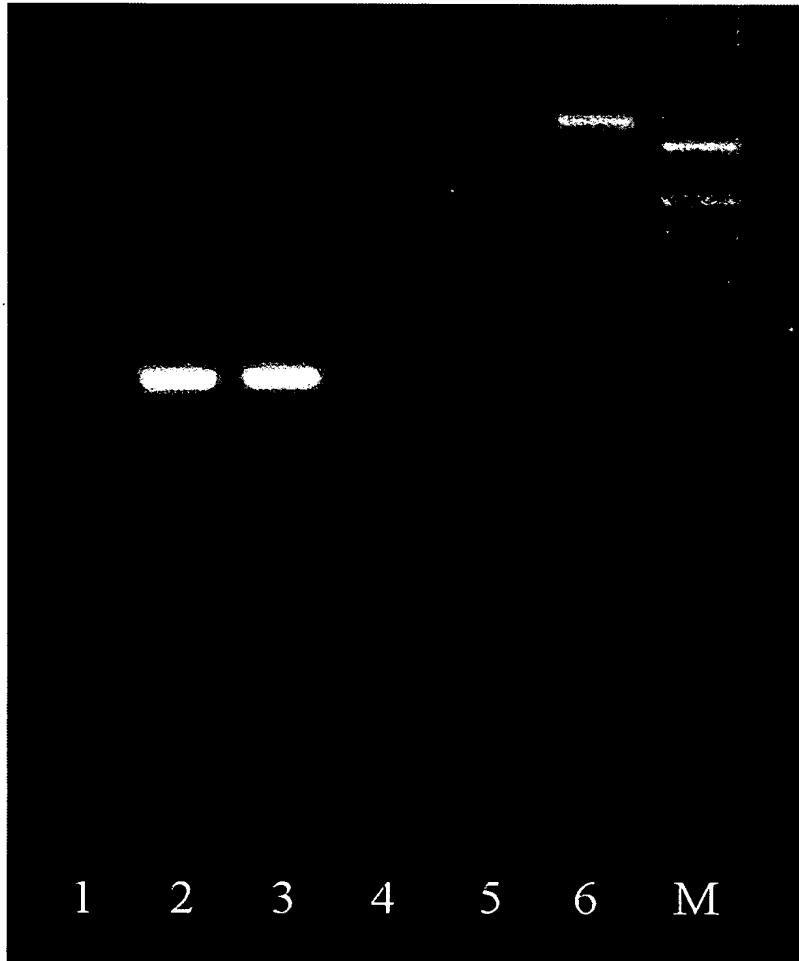


Figure 6

MCP-1 induced VLA binding by endothelial cells (n=2)

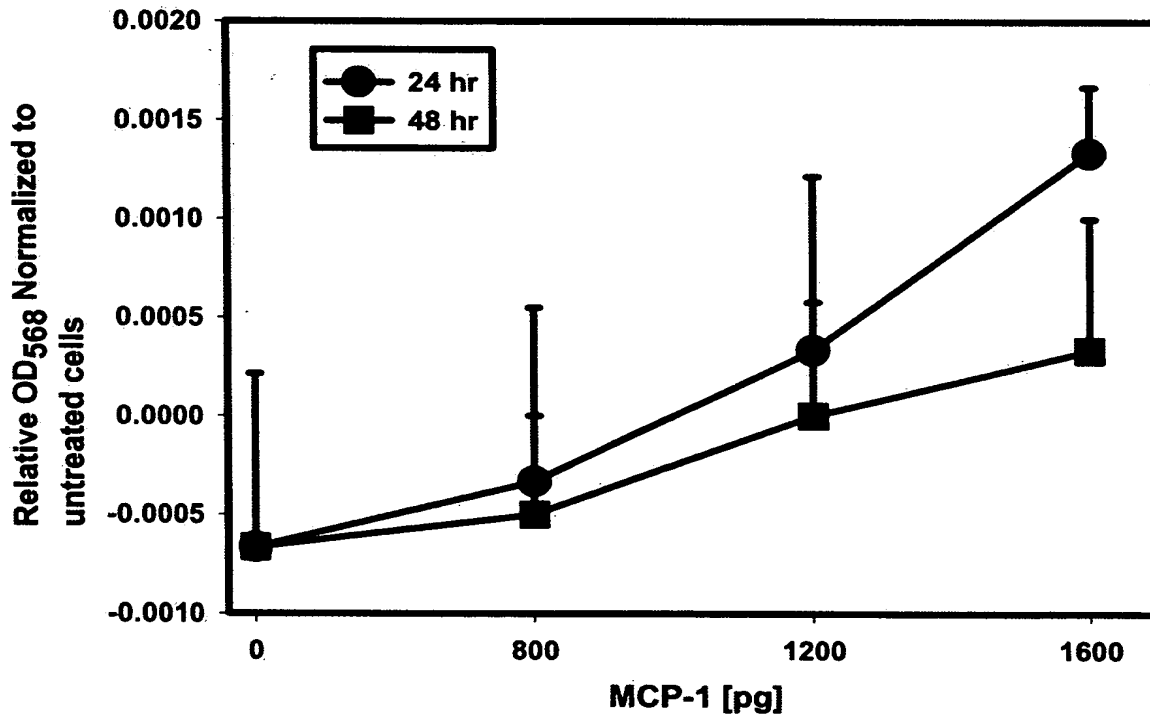


Figure 7

H₂O₂ treated endothelial cells Time course and conc curve of induced binding to Recombinant human VLA1-Alexa568

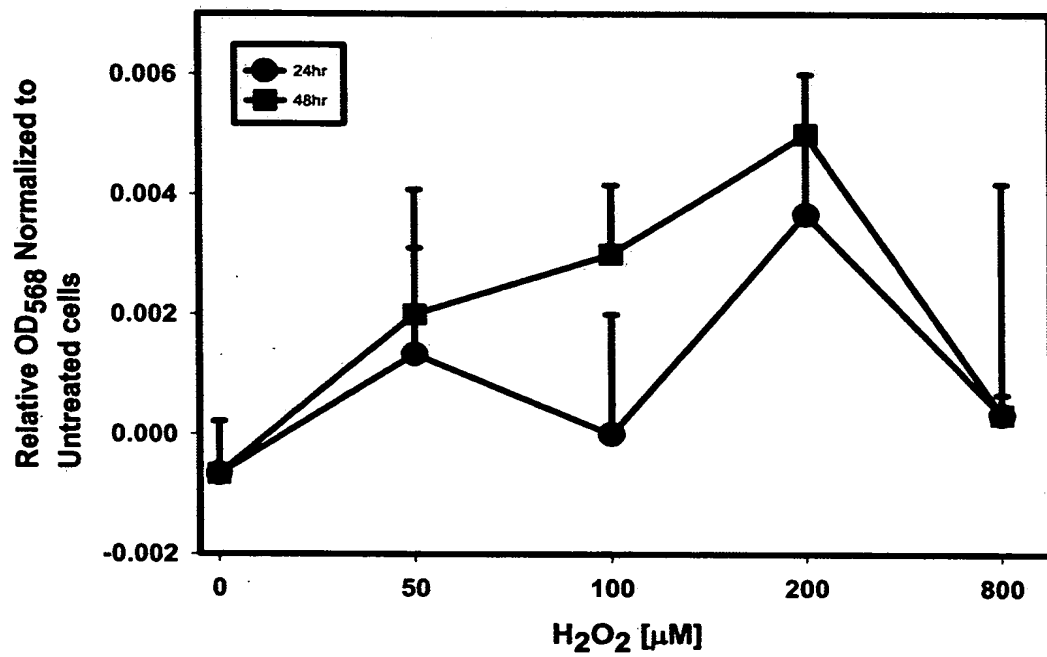


Figure 8

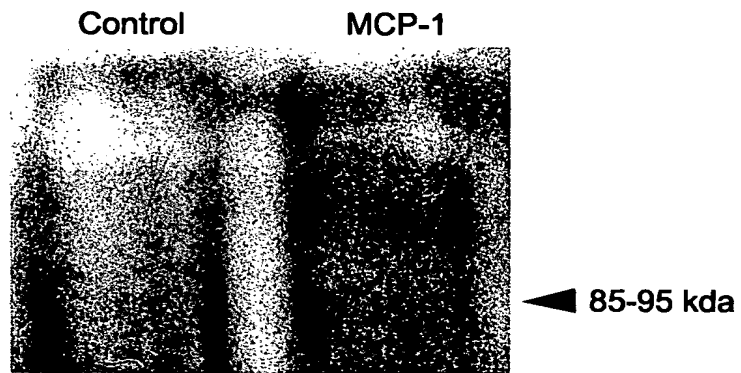


Figure 9

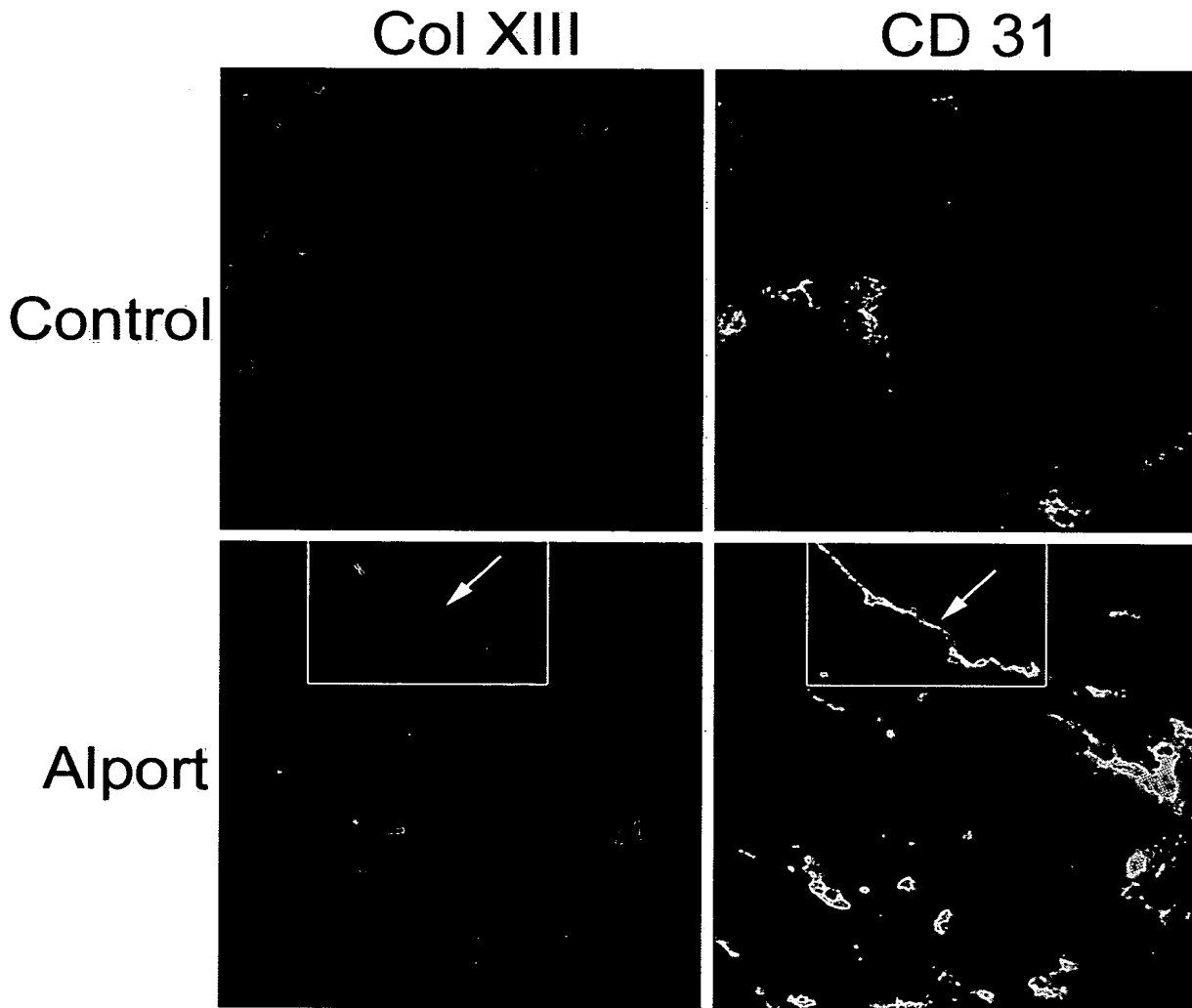


Figure 10